

POWERFLEX®

PART NUMBER

PFR85-427

DESCRIPTION

REAR SUBFRAME MOUNTING BUSH

INSTALLATION GUIDE

Contents (parts per pack):

4 x Polyurethane A Bushes 1 x PTFE/Silicone Grease
4 x Polyurethane B Bushes 4 x Stainless Steel Sleeves

Please read the complete fitting instructions and check package components before fitment. These fitting instructions are to be used as a guide and in conjunction with workshop manual.

It is recommended that:

- all work to be carried out by a licensed technician;
- all safety precautions adhered to;
- wheel alignment to be checked and adjusted as required after any suspension work.
- All fasteners must be tensioned to manufacturer's torque settings.



Fitting Instructions:

1. Remove the original rubber bush from the rear subframe.
2. Clean off any dirt and corrosion from the bore of the subframe, and file off any sharp edges.
3. Push the polyurethane part labelled 85-427A UPPER into the bore of the frame from above, until the top hat section sits on the surface of the frame.
4. Push the polyurethane part 85-427B into the bore from below, so the top hat section sits on the underside of the subframe.
5. Apply some of the supplied grease to the bore of the polyurethane parts.
6. Push the stainless steel sleeve into the bore of the bush from underneath, until the flat section sits flush inside the polyurethane part B.
7. Tension all hardware to manufacturers recommended torque settings.

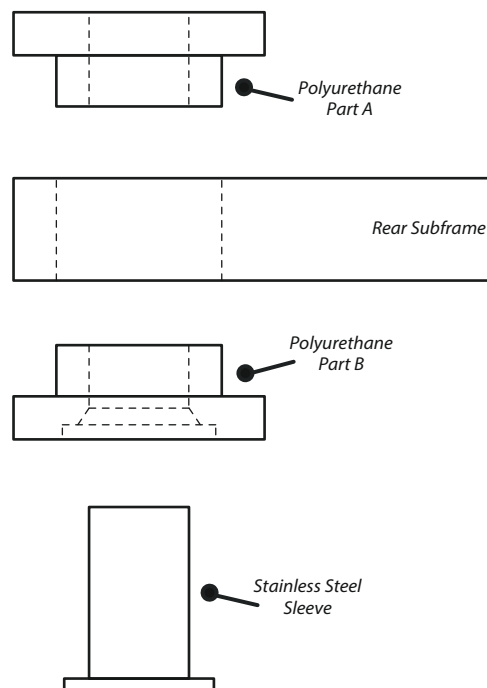


Figure 1