

POWERFLEX

PART NUMBER

PFR80-1517

DESCRIPTION

REAR TRAILING ARM BUSH

INSTALLATION GUIDE

Contents (parts per pack):

2 x Polyurethane A Bushes

2 x Polyurethane B Bushes

1 x Grease

Please read the complete fitting instructions and check package components before fitment. These fitting instructions are to be used as a guide and in conjunction with workshop manual.

It is recommended that:

-all work to be carried out by a licensed technician;

-all safety precautions adhered to;

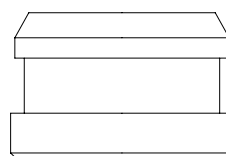
-wheel alignment to be checked and adjusted as required after any suspension work.

-All fasteners must be tensioned to manufacturer's torque settings.

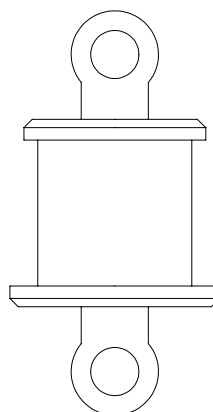


Fitting Instructions:

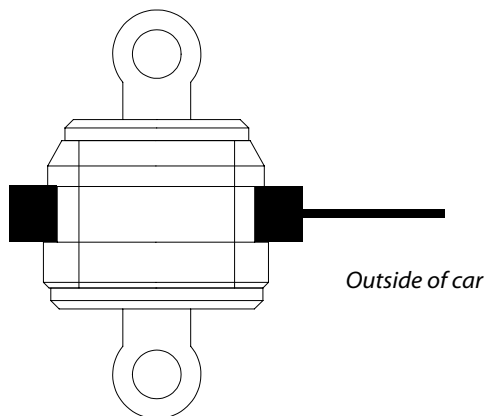
1. Remove the original bush from the trailing arm.
2. Clean any dirt or corrosion from the bore and surface of the arm and file off any sharp edges.
3. Apply some washing up liquid around the bore of the trailing arm. Using suitable adaptors and a press, push polyurethane part A into the bore of the arm, with the smaller lip facing towards the Inside of the car.
4. Apply the supplied grease into the knurled bore of part A.
5. Push part B into the bore of part A from the inside direction of the car. Use suitable adaptors and a press to do this, while making sure to apply the force on the polyurethane bush face and not on the moulded in metal bracket.
6. Refit the trailing arm to the car and tension all hardware to manufacturers recommended torque settings.



A Part Polyurethane Bush
Fitted from outside of car



B Part Polyurethane Bush



Fitted Assembly



Image showing correctly fitted part